



Electoral process abroad

Procedures and alternative voting methods

Presented by:
Angelica CARAMAN
Chairperson, CEC Moldova

Date:
31 March 2026





Brief history

The issue of voting abroad gained significance during the election campaigns for the parliamentary elections of 5 April 2009 and the early parliamentary elections of 29 July 2009.

2009

2010

On 18 June 2010, in the Electoral Code were included rules regarding the establishment and functioning of polling stations abroad. For the first time in the Republic of Moldova, polling stations were organized abroad, during the republican constitutional referendum of 5 September 2010.

Clear criteria for the establishment of polling stations abroad were set out in the new Electoral Code, adopted in December 2022.

2022

For the parliamentary elections from the Republic of Moldova of 28 September 2025, the list of countries for the partial implementation of postal voting was expanded to 10.

2025

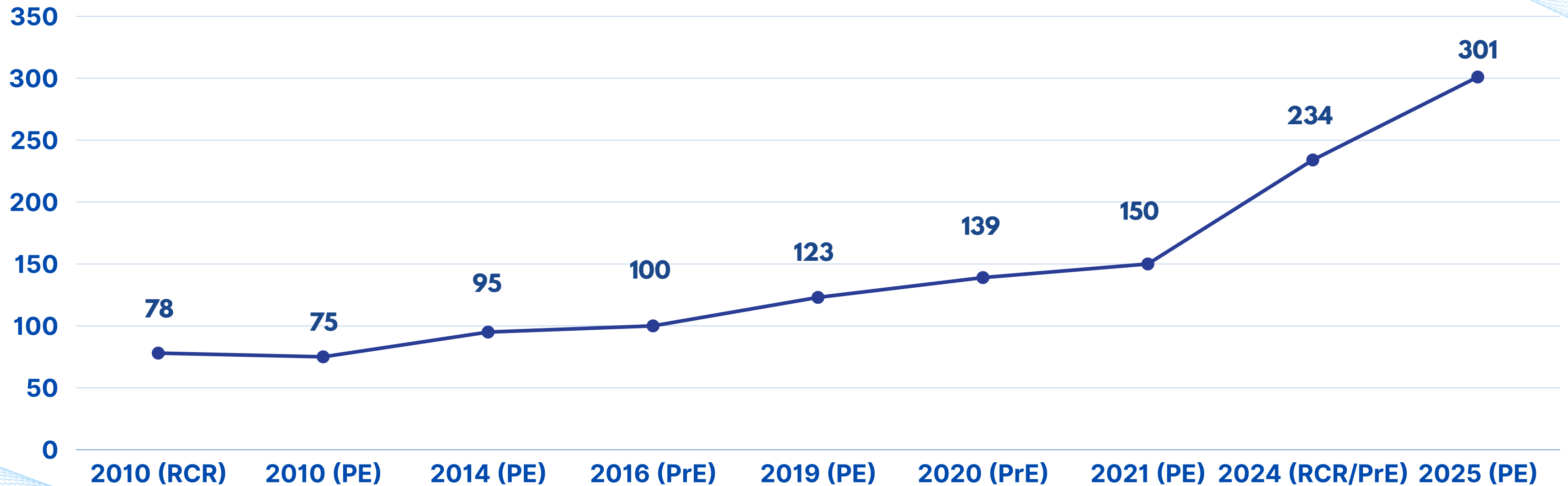
In April 2024, the Parliament adopted the Law no. 109 on the partial implementation of postal voting, which was applied for the first time in 6 countries, during the presidential elections and the constitutional referendum of 20 October 2024.

2024



Number of polling stations opened/established abroad

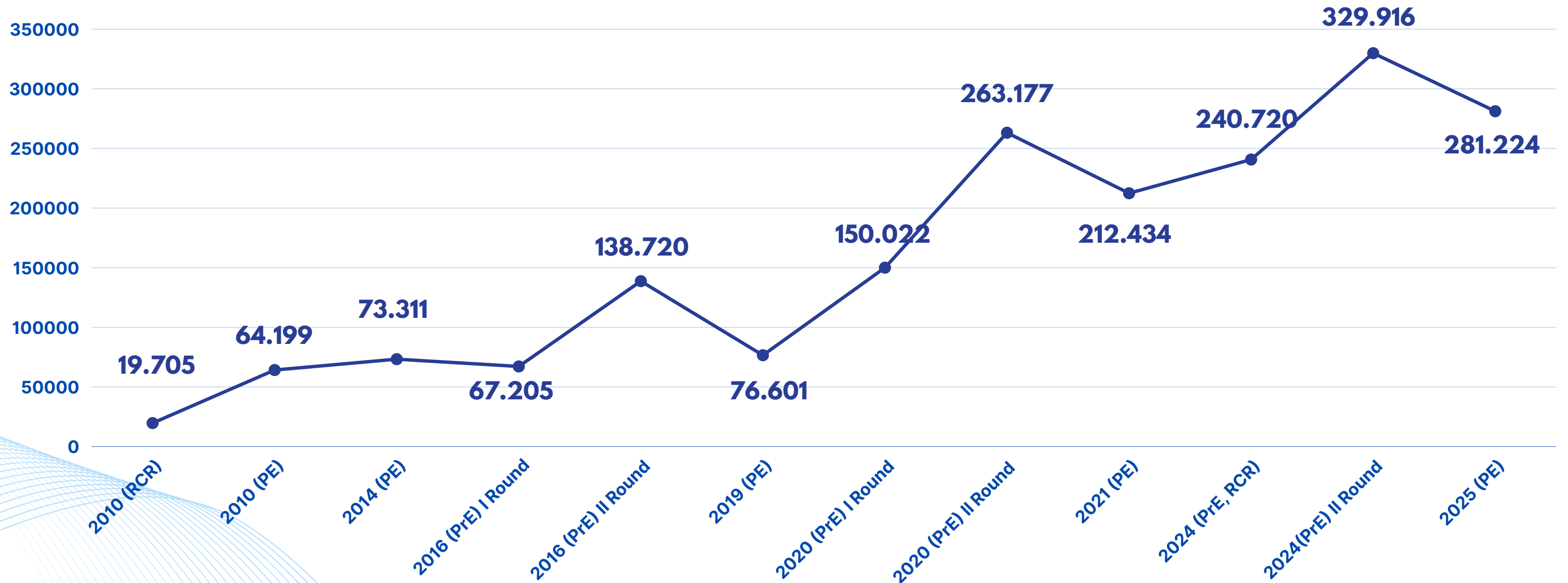
(2010 - 2025)





Dynamics of voting participation in polling stations from abroad

(2010 - 2025)



Elections organisation

Central Electoral Commission



Central Electoral Commission is an independent state body established to implement electoral policy to ensure the proper conduct of elections, as well as to oversight and control the compliance with legal provisions on the financing of political parties and electoral campaigns.



Ministry of Foreign Affairs



Provide the necessary assistance, within the limits of its competence and the applicable legal framework, for the organization and conduct of elections at polling stations established abroad.

Diaspora Relations Office (BRD) of the State Chancellery



District Electoral Council for the polling stations established abroad no. 38



Precinct Electoral Bureaus established abroad



Cooperation with MFA

In the process of establishing polling stations abroad, the Ministry of Foreign Affairs provides the Central Electoral Commission with data on:

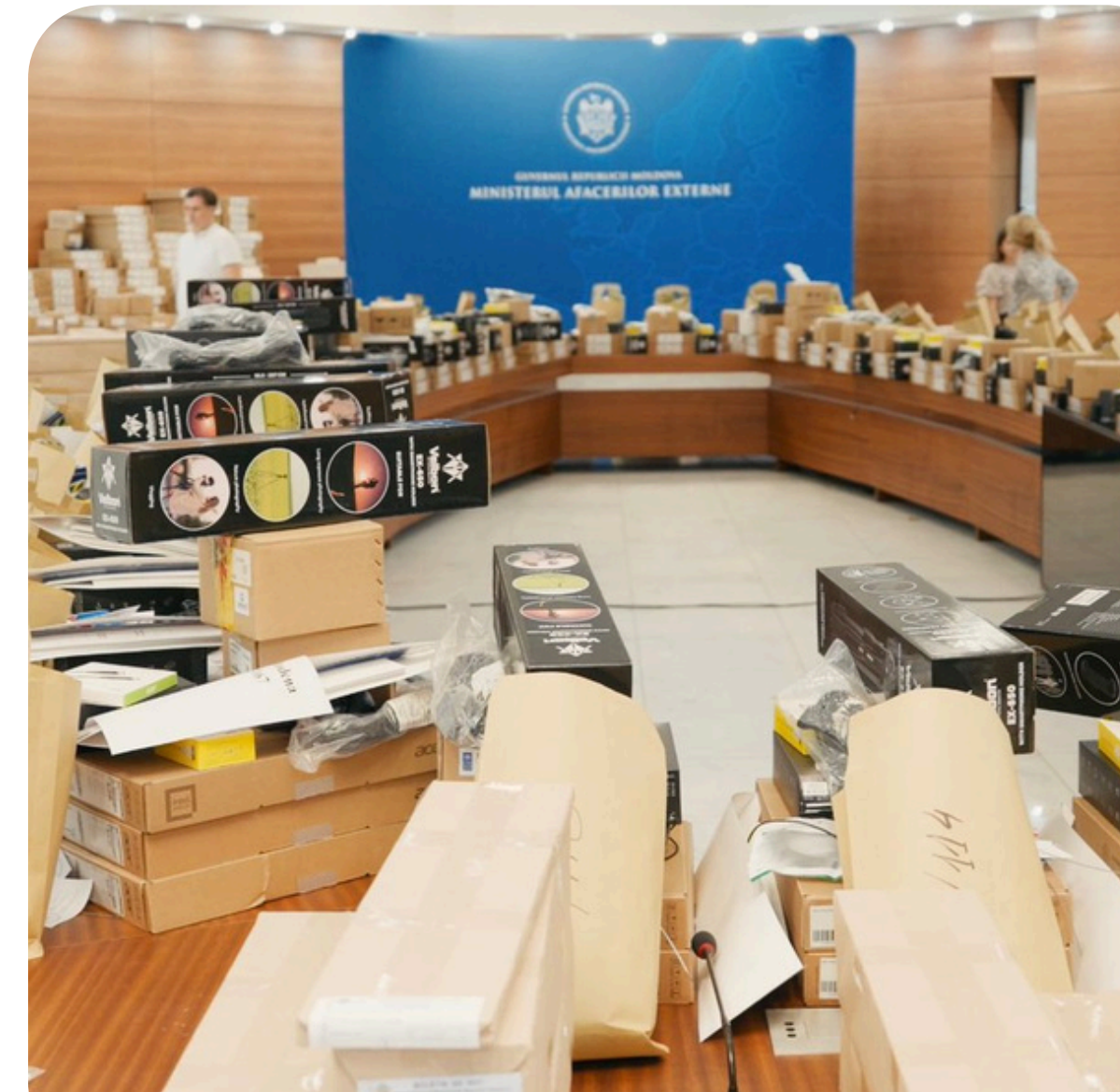
- ✓ the number and location of citizens of the Republic of Moldova abroad;
- ✓ the consent of the competent authorities of the host countries regarding the organization and conduct of elections/referendums on their territory;
- ✓ the possibility of providing technical and logistical support for the voting process.

Within the electoral processes, the Ministry of Foreign Affairs has the following responsibilities:

negotiates with the authorities of host countries the possibilities for establishing polling stations on their territory;

coordinates the transportation, delivery, and return of ballots from the Precinct Electoral Bureaus from abroad, as well as of all materials related to the organization and conduct of elections.

provides polling stations with personnel and identifies spaces for the respective polling stations;





Cooperation with Diaspora Relations Office



- ✓ Providing data on the number of voters located outside the country.
- ✓ Participation in the interinstitutional working group on the organization and conduct of elections at polling stations abroad.
- ✓ Organization of meetings with members of the diaspora, including within the framework of public consultations.
- ✓ Contribution to the organization of information campaigns on electoral procedures, outside the country.

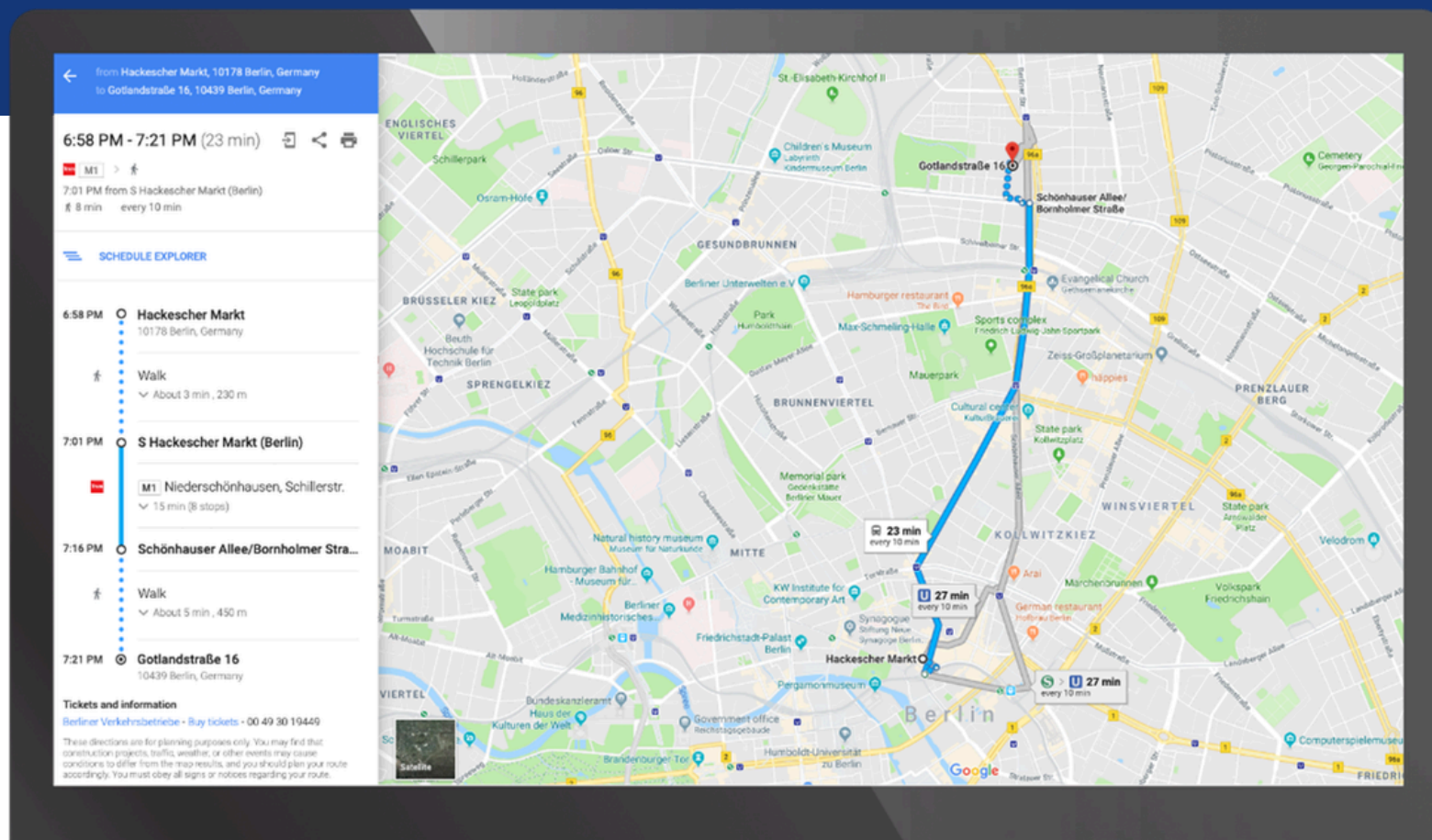


diaspora.cec.md

The website is intended for all citizens of the Republic of Moldova with voting rights, temporarily or permanently residing abroad, created to facilitate their access to electoral processes from abroad.

When a visitor accesses the page diaspora.cec.md, the browser requests confirmation of their geographic location.

Once the visitor allows access, the website displays the nearest polling stations, based on their location.



Comisia Electorală Centrală a Republicii Moldova



Selectați procedura de înregistrare pentru
alegerile parlamentare din 28 septembrie 2025

Înregistrarea prealabilă
Înregistrarea prealabilă este o procedură opțională prin care cetățenii Republicii Moldova cu drept de vot își anunță intenția de a vota într-o anumită localitate din străinătate.

Înregistrarea pentru votul prin corespondență
Înregistrarea pentru votul prin corespondență este o procedură obligatorie prin care alegătorul își exprimă intenția de a vota în străinătate cu utilizarea serviciilor poștale/de curierat, completând o cerere online în aplicația „Înregistrarea pentru votul prin corespondență”.

© 2025 Comisia Electorală Centrală a Republicii Moldova

Preliminary registration

→ Classic voting

Preliminary registration is not mandatory and is carried out only in the case of presidential elections, parliamentary elections, and republican referendums.

→ Postal Voting

Registration for postal voting is a mandatory procedure through which citizens of the Republic of Moldova with voting rights notify the Central Electoral Commission of their intention to exercise their right to vote by mail.

Procedure by which citizens of the Republic of Moldova with voting rights register through the official website managed by the Central Electoral Commission – inregistrare.cec.md. The purpose of preliminary registration is to determine the number of voters intending to vote abroad, including by mail, and to prepare the voters' lists for postal voting.

Establishment of polling stations abroad

↓ Polling stations abroad are organized at least 35 days before the elections date.

→ one or more polling stations are established near the diplomatic missions and consular offices of the Republic of Moldova.

→ with the consent of the competent authorities of the host countries, one or more polling stations are established in localities where at least 500 citizens of the Republic of Moldova with voting rights are temporarily located or reside.

Participation dynamic

dynamic of voters participation in polling stations from abroad in the last 3 elections.

Preliminary registration

data on the preliminary registration of citizens of the Republic of Moldova from abroad.

Information provided by MFA

information provided by the Ministry of Foreign Affairs on the number and location of citizens of the Republic of Moldova from abroad, as well as other relevant data for the opening of polling stations abroad.



Criteria that served as a ground for the determination of the countries where the postal voting was implemented:



01

the absence of polling stations in the host country or a long distance to the nearest polling station previously opened;

02

the experience of implementing postal voting in the host country;

03

preliminary registration for the previous elections of at least 30 requests;

04

secure and reliable postal services.



Postal voting statistics

2024

2025

✓ Preliminary registration requests

1986

2606

✓ Accepted requests and sent envelopes

1809

2469

✓ Received envelopes

1312 - I round
1459 - II round

2057

✓ Response rate

72,52% - I round
80,65% - II round

83,31%



Comparative table of early experiences in the implementation of postal voting in selected countries

Country	Year of implementation	Total voters	Voters registered for postal voting (VpC)	Rate (%) of total voters	Outer envelopes received on time	Rate (%)
Republic of Moldova	2024 I Round	2 740 172	1 809	0,066	1 312	72,52
	2024 II Round				1 459	80,65
	2025	2 763 678	2 469	0,089	2 057	83,31
Romania	2016	18 900 000	8 899	0,047	4 591	51,6
	2019	18 300 000	35 917	0,19	25 319	70,5
	2020		35 808	0,19	21 329	60
Poland	2015	30 768 394 (within the country and abroad)	34 085	0,11	27 403	80,4
	2020		704 111	2,28	617 631	87,8
Hungary	2014	8 042 272	193 793	2,40	128 712	66,4
	2018		378 449	4,70	267 233	70,6
	2022		456 129	5,67	318 083	69,7
Singapore	2023	2 709 407	3 432	0,12	1 345	39,2
Finland	2019	4 510 040	12 308	0,27	6 166	50,1

***IFES Study**

Electoral logistics



480 SCANERS

Used in polling stations from abroad



4 759 COMPUTERS

600 Sent to polling stations abroad

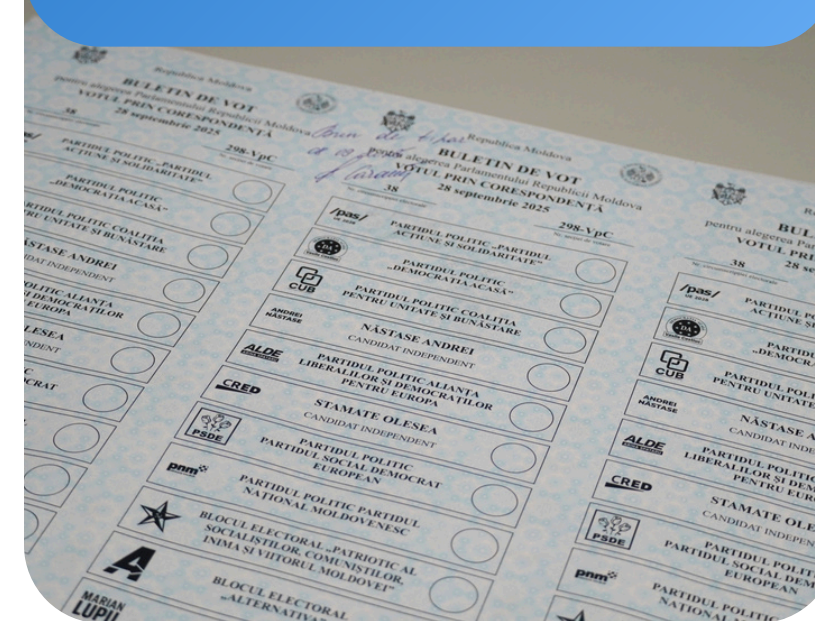


TABLETS

Used in polling stations from abroad

5000

Polling stations abroad are provided with a number of ballot papers not exceeding 5,000, as established by a CEC decision.



Deadlines

Classic vote

CEC sends the ballots through the Ministry of Foreign Affairs at least 5 days before elections day.

Postal voting

Sending ballots to the electoral bureaus, along with envelopes and electoral materials necessary for postal voting, no later than 20 days before elections day.

STATISTICS LAST ELECTIONS

➔ 301 POLLING STATIONS IN 41 COUNTRIES

including 4 for postal voting

➔ 281 224 participated voters

➔ 1 894 voters by mail

➔ 16 145 preliminary registrations

2606 registrations for postal voting



CHALLENGES



Security of digital infrastructure

Challenges associated with logistical aspects and strict deadlines

Attempts of external interference and political influence

Manipulation and abusive use of democratic instruments

Challenges related to equal opportunities and compliance with financing rules

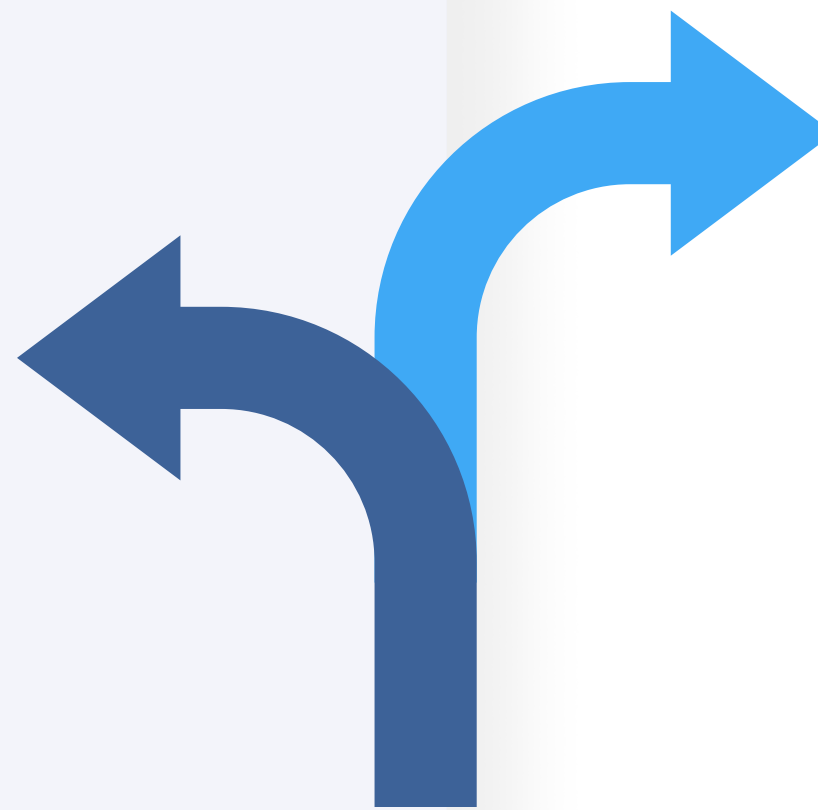
SOLUTIONS

Information resilience and development of cybersecurity skills

Increasing the response capacity of institutions

Awareness-raising and accountability to prevent negative phenomena in elections

Continuous training for electoral staff and oversight authorities



Thank you for your attention!



cec.md



info@cec.md



+ 373 22 251 451

