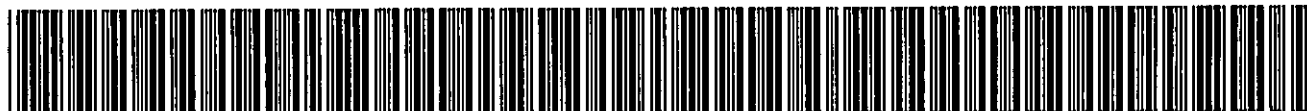


Date Printed: 12/31/2008

JTS Box Number: IFES_14
Tab Number: 29
Document Title: GOVERNMENT GAZETTE OF THE REPUBLIC OF
NAMIZIA, R0,60 - NO 368, NO 6 -
Document Date: 1992
Document Country: NAM
Document Language: ENG
IFES ID: EL00100



* C C 3 F 3 9 6 D - 3 2 6 D - 4 F 9 A - 9 6 3 F - B F E 6 2 F D 6 8 7 5 3 *



GOVERNMENT GAZETTE OF THE REPUBLIC OF NAMIBIA

R0,60

WINDHOEK — 3 March 1992

No. 368

CONTENTS

	<i>Page</i>
PROCLAMATION	
No. 6 Establishment of the boundaries of regions and Local Authorities in Namibia	1

PROCLAMATION

by the

PRESIDENT OF THE REPUBLIC OF NAMIBIA

No. 6

1992

ESTABLISHMENT OF THE BOUNDARIES OF REGIONS AND LOCAL AUTHORITIES IN NAMIBIA

Under the powers vested in me by Article 137(4) of the Namibian Constitution, I hereby establish in accordance with the terms of the report of the First Delimitation Commission of Namibia dated 20 June 1991 -

- (a) the boundaries of regions referred to in Chapter 12 of the Namibian Constitution as set out in the First Schedule; and
- (b) the boundaries of Local Authorities referred to in Chapter 12 of the Namibian Constitution as set out in the Second Schedule.

Given under my Hand and the Seal of the Republic of Namibia at Windhoek this 8th day of February, One Thousand Nine Hundred and Ninety-two.

Sam Nujoma
President

BY ORDER OF THE PRESIDENT-IN-CABINET

FIRST SCHEDULE
BOUNDARIES OF REGIONS

REGION NO. 1: KUNENE REGION comprising:

- (a) The district of Kaokoland comprising Kaokoland Areas 1 and 2 as defined in Schedule A to Government Notice 2428 of 1972;
- (b) that part of the district of Ovambo, as defined in Schedule C to Government Notice 2428 of 1972, situated to the west of the imaginary line starting at the south-western corner beacon of the farm Quarantine Station 742 and ending at Boundary Beacon 5 on the northern boundary of Namibia;
- (c) the district of Outjo as defined in Government Notice 580 of 1973;
- (d) that part of the district of Tsumeb, as defined in Government Notice 99 of 1977, bounded as follows:

Beginning at a point where the southern boundary of the district of Ovambo intersects the western road reserve boundary of trunk road 1, section 10; thence south-eastwards along the said reserve boundary, but excluding the adjoining airfield, to a point where the said road reserve boundary intersects the northern boundary of the farm Cordonia 1067; thence westwards along the northern boundaries of and excluding the said farm and the farm Onguma 314 to the north-western corner beacon of the last-mentioned farm; thence generally southwards along the boundaries of and excluding the last-mentioned farm and the farms Vergenoeg 942, Kleinbegin 941, Leeudrink 940, Farm 858, Nadubib 1083, Heliodor 857, Obab 856, Mara 1263, Lynplaas 436, Vrede 435, Olifantslaagte 433, Nooitgedag 418 and Hestria 417 to the north-western corner beacon of the last-mentioned farm; thence north-westwards in a straight line to a point where the parallel of latitude 19°05' south intersects the meridian of longitude 16°14' east; thence northwards in a straight line along the meridian of longitude 16°14' east to a point where it intersects the parallel of latitude 18°30' south on the southern boundary of the said district of Ovambo; thence eastwards along the said boundary to a point where it intersects the western road reserve boundary of trunk road 1, section 10, the point of beginning;

- (e) that part of the district of Damaraland, as defined in Schedule B of Government Notice 2428 of 1972, situated to the north of the middle of the Ugab River; and
- (f) that part of the district of Swakopmund, as defined in Government Notice 2425 of 1972, which is situated to the north of the middle of the Ugab river.

REGION NO. 2: OMUSATI REGION comprising the area bounded as follows:

Beginning at Boundary Beacon 5 on the northern boundary of Namibia; thence eastwards along the said boundary to a point where it intersects the middle of the Shakambebe Oshana; thence generally southwards along the middle of the said Oshana to a point where the -69500 metre y-co-ordinate line intersects the -479000 metre x-co-ordinate line on the LO 22/15 - trigonometrical survey system; thence generally south-westwards in a straight line to a point where the middle of the Etaka Oshana intersects the parallel of latitude $18^{\circ}02'$ south; thence generally south-eastwards along the middle of the said Oshana to a point where the parallel of latitude $15^{\circ}30'$ south intersects the meridian of longitude $18^{\circ}09'$ east; thence generally southwards in a straight line to a point where the parallel of latitude $18^{\circ}39'$ south intersects the meridian of longitude $15^{\circ}34'$ east on the northern boundary of the Etosha National Park as defined in Schedule 2 to the Nature Conservation Ordinance, 1975 (Ordinance 4 of 1975); thence generally westwards along the said boundary to a point where it intersects the south-western corner beacon of the farm Quarantine Station 742; thence northwards in a straight line to Boundary Beacon 5 on the northern boundary of Namibia, the point of beginning.

REGION NO. 3: OSHANA REGION comprising the area bounded as follows:

Beginning at a point in the middle of the Shakambebe Oshana where the -69500 metre y-co-ordinate line intersects the -479000 metre x-co-ordinate line on the LO 22/15 - trigonometrical survey system; thence generally eastwards in a straight line to a point where the parallel of latitude $17^{\circ}41'20''$ south intersects the meridian of longitude 16° east; thence southwards in a straight line to the north-eastern corner beacon of the farm Ondangwa Town and Townlands 882; thence southwards along the boundary of and including the said farm to the south-eastern corner beacon of that farm; thence southwards in a straight line to a point where the parallel of latitude $18^{\circ}01'$ south intersects the meridian of longitude 16° east in the middle of a road running in a south-western to north-eastern direction; thence generally north-eastwards along the middle of the said road for approximately two kilometres to a point where it intersects a road running in a northern to southern direction at the intersection of the parallel of latitude $18^{\circ}01'10''$ south and the meridian of longitude $16^{\circ}00'45''$ east; thence generally southwards along the middle of the last-mentioned road to the trigonometrical beacon Okaruku No. 156 at the intersection of the parallel of latitude $18^{\circ}13'20''$ south and the meridian of longitude $16^{\circ}01'30''$ east; thence generally south-westwards along the middle of the said road to a point where the parallel of latitude $18^{\circ}18'30''$ south intersects the meridian of longitude $15^{\circ}57'$ east; thence generally southwards along the middle of the said road to a point where the -101350 metre y-co-ordinate line intersects the -400000 metre x-co-ordinate line on the said survey system; thence westwards in a straight line to a point where the -400000 metre x-co-ordinate line on the said survey system intersects the middle of the Ekuma Oshana; thence generally southwards along the middle of the said Oshana to a point where the northern boundary of the Etosha National Park as defined in Schedule 2 to the Nature Conservation Ordinance, 1975 (Ordinance 4 of 1975), is

intersected; thence generally westwards, southwards and westwards along the said boundary to a point where the parallel of latitude $18^{\circ}39'$ south intersects the meridian of longitude $15^{\circ}34'$ east; thence generally northwards in a straight line to a point where the parallel of latitude $15^{\circ}30'$ south intersects the meridian of longitude $18^{\circ}09'$ east in the middle of the Etaka Oshana; thence generally north-westwards along the middle of the said Oshana to a point where it intersects the parallel of latitude $18^{\circ}02'$ south; thence generally north-eastwards in a straight line to a point where the -69500 metre y-co-ordinate line intersects the -479000 metre x-co-ordinate line on the said survey system in the middle of the Shakambebe Oshana, the point of beginning.

REGION NO. 4: OHANGWENA REGION comprising the area bounded as follows:

Beginning at a point in the middle of the Shakambebe Oshana where it intersects the northern boundary of Namibia; thence eastwards along the said boundary to a point where it intersects the meridian of longitude 18° east; thence southwards in a straight line to a point where the parallel of latitude $17^{\circ}45'$ south intersects the said meridian; thence westwards in a straight line to a point where the parallel of latitude $17^{\circ}46'$ south intersects the meridian of longitude $16^{\circ}45'20''$ east; thence generally south-westwards in a straight line to a point where the parallel of latitude $17^{\circ}56'$ south intersects the meridian of longitude $16^{\circ}22'$ east; thence generally north-westwards in a straight line to a point where the parallel of latitude $17^{\circ}41'20''$ south intersects the meridian of longitude 16° east; thence generally westwards in a straight line to a point where the -69500 metre y-co-ordinate line intersects the -479000 metre x-co-ordinate line on the LO 22/15-trigonometrical survey system in the middle of the Shakambebe Oshana; thence generally northwards along the middle of the said Oshana to a point where it intersects the northern boundary of Namibia, the point of beginning.

REGION NO. 5: OSHIKOTO REGION comprising:

- (a) The district of Tsumeb, as defined in Government Notice 99 of 1977, but excluding that part of the said district referred to in paragraph (d) of the definition of **REGION NO. 1: KUNENE REGION**;
- (b) that part of the district of Ovambo, as defined in Schedule C to Government Notice 2428 of 1972, bounded as follows:

Beginning at a point where the parallel of latitude $17^{\circ}41'20''$ south intersects the meridian of longitude 16° east; thence generally south-eastwards in a straight line to a point where the parallel of latitude $17^{\circ}56'$ south intersects the meridian of longitude $16^{\circ}22'$ east; thence generally north-eastwards in a straight line to a point where the parallel of latitude $17^{\circ}46'$ south intersects the meridian of longitude $16^{\circ}45'20''$ east; thence eastwards in a straight line to a point where the parallel of latitude $17^{\circ}45'$ south intersects the meridian of longitude 18° east; thence southwards in a straight line to a point where it intersects the northern boundary of the said district of Tsumeb; thence generally westwards, north-westwards and westwards along the said northern boundary and the northern boundary of the said Etosha National Park to a point where it intersects

the middle of the Ekuma Oshana; thence northwards along the middle of the said Oshana to a point where it intersects the -400000 metre x-coordinate line on the LO 22/15-trigonometrical survey system; thence eastwards in a straight line to a point where the -101350 metre y-coordinate line intersects the -400000 metre x-coordinate line on the said survey system in the middle of a road running in a northern and southern direction; thence generally northwards along the middle of the said road to a point where the parallel of latitude $18^{\circ}18'30''$ south intersects the meridian of longitude $15^{\circ}57'$ east; thence generally north-eastwards along the middle of the said road to the trigonometrical beacon Okaruku No. 156 at the intersection of the parallel of latitude $18^{\circ}13'20''$ south and the meridian of longitude $16^{\circ}01'30''$ east; thence generally northwards along the middle of the said road to a point where it intersects the middle of a road running in a south-western and north-eastern direction at the intersection of the parallel of latitude $18^{\circ}01'10''$ south and the meridian of longitude $16^{\circ}00'45''$ east; thence generally south-westwards along the middle of the last-mentioned road for approximately two kilometres to a point where the parallel of latitude $18^{\circ}01'$ south intersects the meridian of longitude 16° east; thence northwards in a straight line to the south-eastern corner beacon of the farm Ondangwa Town and Townlands 882; thence northwards along the boundary of and excluding the said farm to the north-eastern corner beacon of that farm; thence northwards in a straight line to a point where the parallel of latitude $17^{\circ}41'$ south intersects the meridian of longitude 16° east, the point of beginning.

REGION NO. 6: OKAVANGO REGION comprising:

That part of Area 1 of the district of Kavango, as defined in Schedule D to Government Notice 2428 of 1972, situated to the west of the meridian of longitude 21° east.

REGION NO. 7: LIAMBEZI REGION comprising:

- (a) That part of Area 1 of the district of Kavango, as defined in Schedule D to Government Notice 2428 of 1972, situated to the east of the meridian of longitude 21° east;
- (b) Area 2 of the said district of Kavango as so defined; and
- (c) the district of Eastern Caprivi as defined in Government Notice 2429 of 1972.

REGION NO. 8: ERONGO REGION comprising:

- (a) That part of the district of Swakopmund, as defined in Government Notice 2425 of 1972, situated to the south of the middle of the Ugab River, but excluding that part of the said district referred to in paragraph (a) of the definition of **REGION NO. 12: HARDAP REGION**;
- (b) that part of the district of Damaraland, as defined in Schedule B to Government Notice 2428 of 1972, situated to the south of the middle of the Ugab River;

- (c) the district of Omaruru as defined in Schedule N to Government Notice R.1148 of 1972;
- (d) the district of Karibib as defined in Schedule M to Government Notice R.1148 of 1972; and
- (e) the district of Walvis Bay as defined in Government Notice 1667 of 1977.

REGION NO. 9: OTHOZONDJUPA REGION comprising:

- (a) The district of Grootfontein as defined in Schedule Q to Government Notice R.1148 of 1972;
- (b) the district of Otjiwarongo as defined in Schedule O to Government Notice R.1148 of 1972;
- (c) the district of Okahandja as defined in Schedule L to Government Notice R.1148 of 1972;
- (d) the district of Hereroland West as defined in Schedule B to Government Notice 1196 of 1970;
- (e) the district of Bushmanland as defined in Schedule C to Government Notice 1196 of 1970; and
- (f) that part of Area 1 of the district of Hereroland East, as defined in Schedule E to Government Notice 2428 of 1972, situated to the north of the middle of the northern branch of the Otjozondjou Omuramba.

REGION NO. 10: OMAHEKE REGION comprising:

- (a) The district of Gobabis as defined in Government Notice 313 of 1976;
- (b) Areas 2 and 3 of the district of Hereroland East as defined in Government Notice 322 of 1976; and
- (c) that part of Area 1 of the district of Hereroland East as defined in Schedule E to Government Notice 2428 of 1972, situated to the south of the middle of the northern branch of the Otjozondjou Omuramba.

REGION NO. 11: KHOMAS REGION comprising:

- (a) The district of Windhoek, as defined in Schedule I to Government Notice R.1148 of 1972 before the amendment of the boundaries of the said district by Government Notice 22 of 1989; and
- (b) that part of the district of Rehoboth, as defined in Schedule G to Government Notice R.1148 of 1972 before the amendment of the boundaries of the said district by Official Notice 92 of 1989 of the former Government of Rehoboth, bounded as follows:

Beginning at the western corner beacon of the farm Tsebris 48; thence generally south-eastwards and eastwards along the boundaries of and including the said farm and the farm Arbeidsgenot 894 to the south-eastern corner beacon of the last-mentioned farm; thence generally north-eastwards along the boundaries of and including the said farm and the farms Kaalvlak 840, Kwakwas 251 and Farm 902 to the south-eastern corner beacon of the last-mentioned farm; thence eastwards along the boundaries of and including the farms Stalhart 252, Naruchas 254 to the south-eastern corner beacon of the last-mentioned farm; thence generally south-eastwards along the boundaries of and including Farm 669, Farm 786 and the farm Geluk Oos to the south-western corner beacon of the last-mentioned farm; thence eastwards along the boundary of and including the last-mentioned farm to the south-eastern corner beacon of that farm; thence generally southwards along the boundaries of and including the farms Uisib 298, Sandheuwel 850, Uisib 298 and Vogelpan 297 to the south-western corner beacon of the last-mentioned farm; thence generally eastwards along the boundaries of and including the farms Kaniegab 295, Konasib 291, Danigas 289 and Eselmaanhaar 288 to the south-eastern corner beacon of the last-mentioned farm; thence generally northwards along the boundaries of and including the last-mentioned farm and the following farms: Farm 881, Riet 287, Garib 286, Farm 888 and Autabib 285 to the north-eastern corner beacon of the last-mentioned farm; thence generally westwards along the boundary of and including the last-mentioned farm to the south-eastern corner beacon of the farm Opdam 284; thence generally northwards along the boundary of and including the said farm to the north-eastern corner beacon of that farm; thence generally north-eastwards and north-westwards along the boundaries of and including the farms Hatsamas Wes 283, Volmoed 720 and Stinkwater 282 to the north-eastern corner beacon of the last-mentioned farm; thence generally westwards, southwards and south-eastwards along the boundaries of and including the last-mentioned farm and the farms Waldburg 734, Blaukrans 281, Farm 882, Blaukrans 281 and Noukomab 272 to the north-eastern corner beacon of the last-mentioned farm; thence generally north-westwards along the boundaries of and including the last-mentioned farm and the farms Kudis 271, Onnaams 270, Afguns 559, Veglus 562 and Kransnek 269 to the eastern corner beacon of the last-mentioned farm; thence generally north-eastwards, northwards, westwards, south-westwards and westwards along the boundaries of and including the last-mentioned farm and the farm Kranzneus 219 to the north-western corner beacon of the last-mentioned farm; thence generally southwards along the boundaries of and including the last-mentioned farm and the farms Verdruk 268 and Groot Aub 267 to the western corner beacon of the last-mentioned farm; thence eastwards, generally south-eastwards, south-westwards and southwards along the boundaries of and including the last-mentioned farm and the farms Nabitsaus 263 and Nauaspoort 261 to the western corner beacon of the last-mentioned farm; thence generally southwards and westwards along the boundaries of and including the farm Naruchas 254 to the north-western corner beacon of the last-mentioned farm; thence generally northwards along the boundaries of the farms Platsand 451 and Kamzwas 253 to the north-eastern corner beacon of the last-mentioned farm; thence generally south-westwards along the boundary of and including the last-mentioned farm to the north-western corner beacon of

that farm; thence generally northwards and south-westwards along the boundaries of and including the following farms: Farm 775, Nineis Noord 911, Nineis Wes 583 and Gurumanas Oos 306 to the north-western corner beacon of the last-mentioned farm; thence generally north-westwards, south-westwards and south-eastwards along the boundaries of and including the farm Gurumanas Wes 241 to the south-western corner beacon of that farm; thence generally south-westwards and south-eastwards along the boundaries of and including the farms Schimmingsrus 896 and Fyndraai 250 to the south-western corner beacon of the last-mentioned farm; thence generally south-westwards along the boundaries of and including the farm Tsebris 48 to the western corner beacon of that farm, the point of beginning.

REGION NO. 12: HARDAP REGION comprising:

- (a) That part of the district of Swakopmund, as defined in Government Notice 2425 of 1972, bounded as follows:

Beginning at a point where the parallel of latitude $23^{\circ}33'$ south intersects the coastline of the Atlantic Ocean approximately 22 kilometres south of the Auchab Water Hole at Sandwich Harbour; thence eastwards in a straight line to a point on the southern bank of the Kuiseb River due south of the Natab Water Hole situated in the said river; thence generally eastwards along the southern bank of the said river to a point due south of the Hudaob Water Hole situated in that river; thence eastwards in a straight line to the trigonometrical beacon DIAR2 at the intersection of the parallel of latitude $23^{\circ}47'38''$ south and the meridian of longitude $15^{\circ}44'34''$ east, thence generally southwards in straight lines between the following trigonometrical beacons:

DIAR2 at the intersection of the parallel of latitude $23^{\circ}47'38''$ south and the meridian of longitude $15^{\circ}44'34''$ east;

DIAR3 at the intersection of the parallel of latitude $24^{\circ}3'23''$ south and the meridian of longitude $15^{\circ}42'48''$ east;

DIAR4 at the intersection of the parallel of latitude $24^{\circ}15'14''$ south and the meridian of longitude $15^{\circ}41'40''$ east;

DIAR5 at the intersection of the parallel of latitude $24^{\circ}25'23''$ south and the meridian of longitude $15^{\circ}41'29''$ east;

DIAR6 at the intersection of the parallel of latitude $24^{\circ}35'4''$ south and the meridian of longitude $15^{\circ}39'28''$ east;

DIAR7 at the intersection of the parallel of latitude $24^{\circ}47'39''$ south and the meridian of longitude $15^{\circ}43'32''$ east;

thence generally southwards in a straight line to a point where the parallel of latitude 25° south intersects the straight line between the trigonometrical beacons DIAR7 at the intersection of the parallel of latitude $24^{\circ}47'39''$ south and the meridian of longitude $15^{\circ}43'32''$ east and DIAR8 at the intersection of the parallel of latitude $25^{\circ}06'27''$ south and the meridian of longitude $15^{\circ}47'57''$ east; thence westwards in a straight line along the parallel of latitude 25° south to a point where it

intersects the coastline of the Atlantic Ocean; thence generally northwards along the said coastline to a point where it intersects the parallel of latitude 23° 33' south approximately 22 kilometres south of the Auchab Water Hole at Sandwich Harbour, the point of beginning;

- (b) the off-shore island commonly known as Hollandsbird Island;
- (c) the district of Maltahöhe, as defined in Schedule E to Government Notice R.1148 of 1972 before the amendment of the boundaries of the said district by Government Notice 22 of 1989;
- (d) the district of Mariental, as defined in Schedule F to Government Notice R.1148 of 1972 before the amendment of the boundaries of the said district by Government Notice 22 of 1989; and
- (e) the district of Rehoboth, as defined in Schedule G to Government Notice R.1148 of 1972 before the amendment of the boundaries of the said district by Official Notice 92 of 1989 of the former Government of Rehoboth, but excluding that part of the said district referred to in paragraph (b) of the definition of REGION NO. 11: KHOMAS REGION.

REGION NO. 13: KARAS REGION comprising:

- (a) The district of Lüderitz as defined in Schedule D to Government Notice R.1148 of 1972;
- (b) the district of Bethanie as defined in Schedule C to Government Notice R.1148 of 1972;
- (c) the district of Keetmanshoop as defined in Schedule B to Government Notice R.1148 of 1972;
- (d) the district of Karasburg as defined in Schedule A to Government Notice R.1148 of 1972;
- (e) the bed of the northern half of the Orange River; and
- (f) the off-shore islands of Namibia situated between the parallel of latitude 25° south and the mouth of the Orange River.

SECOND SCHEDULE

BOUNDARIES OF LOCAL AUTHORITIES

1. Aranos comprising the area, the boundaries of which are defined in the Schedule to Proclamation 9 of 1978.
2. Ariamsvlei comprising the area, the boundaries of which are re-defined in Proclamation 27 of 1980.
3. Aris comprising the area, the boundaries of which are defined in the Schedule to Proclamation 6 of 1981.

4. Aroab comprising the area, the boundaries of which are re-defined in the Schedule to Proclamation 22 of 1979.
5. Aus comprising the area, the boundaries of which are defined in the Schedule to Proclamation 28 of 1980.
6. Bethanie comprising the area, the boundaries of which are defined in the Schedule to the repealed Proclamation 4 of 1946.
7. Gobabis comprising the area, the boundaries of which are defined in the Schedule to Proclamation 19 of 1955.
8. Gochas comprising the area, the boundaries of which are defined in the Schedule to the repealed Proclamation 40 of 1958.
9. Grootfontein comprising the area, the boundaries of which are re-defined in the Schedule to Proclamation 11 of 1977.
10. Grünau comprising the area, the boundaries of which are defined in Proclamation 30 of 1975.
11. Hentiesbaai comprising the area, the boundaries of which are defined in the Schedule to Proclamation 46 of 1971.
12. Kalkfeld comprising the area, the boundaries of which are defined in the Schedule to Proclamation 11 of 1978.
13. Kalkrand comprising the area, the boundaries of which are defined in Proclamation 29 of 1980.
14. Kamanjab comprising the area, the boundaries of which are defined in the Schedule to Proclamation 46 of 1971.
15. Kappsfarm comprising the area, the boundaries of which are defined in the Schedule to Proclamation 7 of 1981.
16. Karasburg comprising the area, the boundaries of which are defined in the Schedule to Proclamation 37 of 1947.
17. Karibib comprising the area, the boundaries of which are defined in the Schedule to Proclamation 71 of 1971.
18. Keetmanshoop comprising the area, the boundaries of which are re-defined in the Schedule to Proclamation 46 of 1969.
19. Koës comprising the area, the boundaries of which are defined in the Schedule to the repealed Proclamation 12 of 1957.
20. Leonardville comprising the area, the boundaries of which are defined in the Schedule to the repealed Proclamation 68 of 1955.
21. Lüderitz comprising the area, the boundaries of which are defined in the Schedule to Proclamation 18 of 1978.
22. Maltahöhe comprising the area bounded as follows:

Beginning at the north-eastern corner beacon of the farm Namseb 24; thence north-eastwards and eastwards along the boundaries of and excluding the said farm and the farms Glückauf 34 and Odette 33 to the south-eastern corner beacon of the last-mentioned farm; thence southwards along the boundary of and excluding the farm Sandpforte 36 to the north-western corner beacon of the farm Karichab 39; thence westwards, southwards, westwards and north-westwards along the boundaries of and excluding the last-mentioned farm and the farms Kachauchab 40 and Daweb 43 to the north-western corner beacon of the last-mentioned farm; thence northwards along the boundary of and excluding the farm Nameb 24 to the north-eastern corner beacon of the said farm, the point of beginning.

This area is indicated on General Plan No. A.539/1957 of Maltahöhe Townlands 35, Registration Division P.

23. Mariental comprising the area, the boundaries of which are re-defined in the Schedule to Proclamation 24 of 1966.
24. Noordoewer comprising the area, the boundaries of which are defined in the Schedule to Proclamation 7 of 1980.
25. Okahandja comprising the area, the boundaries of which are re-defined in the Schedule to Proclamation 66 of 1961.
26. Okakarara comprising the area, the boundaries of which are indicated on diagram No. A.894/90 as set out in Annexure 1.
27. Omaruru comprising the area, the boundaries of which are re-defined in the Schedule to Proclamation 48 of 1972.
28. Omitara comprising the area, the boundaries of which are defined in Proclamation 3 of 1971.
29. Ondangwa comprising the area, the boundaries of which are indicated on diagram No. A.64/91 as set out in Annexure 2.
30. Ongwediva comprising the area, the boundaries of which are indicated on diagram No. A.66/91 as set out in Annexure 3.
31. Opuwo comprising the area, the boundaries of which are indicated on diagram No. A.165/91 as set out in Annexure 4.
32. Oshakati comprising the area, the boundaries of which are indicated on diagram No. A.65/91 as set out in Annexure 5.

33. Otavi comprising the areas, the boundaries of which are defined in the Schedule to Proclamation 41 of 1958 and Government Notice 46 of 1959.
 34. Otjiwarongo comprising the area, the boundaries of which are re-defined in the Schedule to Proclamation 12 of 1977.
 35. Outjo comprising the area, the boundaries of which are re-defined in the Schedule to Proclamation 92 of 1970.
 36. Rehoboth comprising the area, the boundaries of which are indicated on diagram No. A.234/73 as set out in Annexure 6.
 37. Stampriet comprising the area, the boundaries of which are defined in the Schedule to Proclamation 13 of 1978.
 38. Summerdown comprising the area, the boundaries of which are defined in Proclamation 23 of 1979.
 39. Swakopmund comprising the area, the boundaries of which are re-defined in Proclamation AG. 9 of 1990.
 40. Tsumeb comprising the area, the boundaries of which are re-defined in the Schedule to Proclamation 31 of 1980.
 41. Usakos comprising the area, the boundaries of which are re-defined in the Schedule to Proclamation 31 of 1961.
 42. Warmbad comprising the area, the boundaries of which are defined in the Schedule to Proclamation 26 of 1980.
 43. Windhoek comprising the area, the boundaries of which are defined in paragraphs (1)(b) and (2)(b) of Proclamation AG. 14 of 1988.
 44. Witvlei comprising the area, the boundaries of which are defined in the Schedule to Proclamation 25 of 1980.
 45. Wlotzkasbaken comprising the area, the boundaries of which are defined in Proclamation 45 of 1972.
-

ANNEXURE 1 : OKAKARARA

APPROVED <i>[Signature]</i>		No. A 894/90			
1991-02-08		SURVEYOR-GENERAL			
SIDES Metres	ANGLES OF DIRECTION	CO-ORDINATES System 22/17		DESIG.	
		y	x		
AA	3 923,59	237 46 59	A - 43 001,70	- 155 197,14	OKA
PC	2 434,62	254 43 38	B - 46 401,20	- 157 288,91	OKB
CD	3 384,99	342 20 19	C - 48 749,84	- 157 930,22	OKC
DE	865,03	32 42 38	D - 49 776,82	- 154 704,78	OKD
EF	86,44	69 28 20	E - 49 309,36	- 153 976,93	OKE
FG	5 483,05	83 44 32	F - 49 228,41	- 153 946,62	OKF 2
GA	1 975,00	159 21 19	G - 43 770,03	- 153 348,96	OKF
AA	3 180,05	159 21 19	H - 41 960,22	- 158 173,76	96
GG	680,00	339 21 19	J - 44 017,78	- 152 712,63	70
			Δ - 41 411,63	- 157 433,90	Grootvlei
			Δ - 50 491,70	- 156 725,90	Okakarara

DESCRIPTION OF BEACONS
 A,C...Iron standard in cairn.
 B-F...20 mm Iron peg in cairn.
 H...Rail sleeper in concrete - cornerpost.
 J...Boiler tubs.

SCALE 1: 75 000

The figure A B C D E F G represents 1 987,6620 hectares of land being the farm OKAKARARA TOWNLANDS No 517 situate in the Registration Division D NAMIBIA

Surveyed in December 1990 by me *[Signature]* Land Surveyor

This diagram is annexed to T 898/91 No. dated 1991-04-03 Registrar of Deeds	The original diagram is No. Transfer/Grant No.	S.R. No. E162/90 Noting Plan OG-5 File No. D 517 Lat 20° 36' S Long 17° 27' E
---	--	---

ANNEXURE 2 : ONDANGWA

APPROVED <i>[Signature]</i>		No. A 64/91			
SURVEYOR-GENERAL		1991-02-21			
SIDES Metres	ANGLES OF DIRECTION	CO-ORDINATES System 22/15 (Prel.)		DESIG.	
AB	7 002,37	269 30 47	A - 98 976,57	- 457 943,19	882A
BC	9 016,25	359 54 55	B - 105 978,68	- 458 002,70	882B
CD	3 025,84	89 03 38	C - 105 992,03	- 448 986,46	882C
DE	6 433,73	141 35 27	D - 102 966,59	- 448 936,84	882D
EA	3 964,93	180 06 08	E - 98 969,49	- 453 978,27	882E
			Δ - 103 436,76	- 452 702,18	OND
			Δ - 101 352,59	- 455 342,40	OND AUX

DESCRIPTION OF BEACONS:
 A, B, C, D, E - Iron standard
 OND - Hole in roof of reservoir
 OND AUX - Concrete pillar

SCALE 1 : 100 000

The figure A B C D E represents 5323,1765 hectares of land, being

FARM ONDANGWA TOWN AND TOWNLANDS No. 882

situate in Registration Division 'A' . REPUBLIC OF NAMIBIA

Surveyed in FEBRUARY 1991 by me *W. E. Voetsmann*
 Land Surveyor

This diagram is annexed to T94/91 No. dated. 1991-04-05 Registrar of Deeds	The original diagram is No. A / annexed to Transfer/Grant No.	S.R. No. E. 16/91 Gen. Plan No. Noting Plan: NS-11 File No. A 882 Lat. 17° 56' Long. 15° 58'
---	--	---

ANNEXURE 3 : ONGWEDIVA

APPROVED <i>[Signature]</i>		No. A66/91			
SURVEYOR-GENERAL 1991-03-11					
SIDES Metres	ANGLES OF DIRECTION	CO-ORDINATES System 22/15 (Prel.)		DESIG.	
AB	5 840,75	269 57 35	A - 78 099,44	- 469 984,22	881A
BC	6 992,99	359 18 08	B - 83 940,19	- 469 988,33	881B
CD	5 908,98	90 04 54	C - 84 025,37	- 462 995,05	881C
DA	6 979,96	179 51 39	D - 78 116,40	- 463 004,28	8800
			Δ - 81 109,75	- 467 054,21	011 2 M
			Δ - 81 941,44	- 466 216,33	011 3 M

DESCRIPTION OF BEACONS:
A, B, C, D - Iron standard

STATE LAND

STATE LAND

SCALE 1 : 100 GCO

The figure A B C D represents 4104,2896 hectares of land, being

FARM ONGWEDIVA TOWN AND TOWNLANDS No. 881

situate in Registration Division 'A' REPUBLIC OF NAMIBIA

Surveyed in FEBRUARY 1991 by me *[Signature]*
Land Surveyor

This diagram is annexed to T 939/91 No. dated 1991-03-05 Registrar of Deeds	The original diagram is No. A / annexed to Transfer/Grant No.	S.N. No. E. 17/91 Gen. Plan No. Noting Plan: RE.S File No. A 881 Lat. 17° 45' Long. 15° 55'
--	--	--

ANNEXURE 4 : OPUWO

APPROVED		No. A 165/91			
1991-04-18		<i>D. Theunissen</i> SURVEYOR-GENERAL			
SIDES Metres	ANGLES OF DIRECTION	CO-ORDINATES		DESIG.	
		Y	X		
	Constant:	- 80 000,00	- 430 000,00		
A B	1 834,34	296 15 30	A - 9 527,08	- 8 379,11	AJ876A
B C	2 688,34	14 43 48	B - 11 172,12	- 7 567,54	AJ876B
C D	3 001,18	76 12 21	C - 10 488,57	- 4 967,56	AJ876C
D E	1 537,30	168 43 20	D - 7 573,95	- 4 251,97	AJ876D
E A	3 455,61*	220 42 27	E - 7 273,33	- 5 759,59	AJ876E
			1) - 8 456,80	- 6 450,92	BUNKER
			2) - 11 722,55	- 6 667,19	GRAF
			3) - 11 251,04	- 3 558,93	QUARRY

Description of Beacons:
 A B C D E.....20mm Round iron peg in concrete under large cairn
 BUNKER.....12mm Drillhole in concrete on top of bunker
 GRAF, QUARRY...16mm Round iron peg in concrete under large cairn and signal

The figure **A B C D E** represents **982,4251 hectares** of land, being **OPUWO TOWNLANDS No. 876** situate in the Registration Division **A** Surveyed in April 1991 by me *[Signature]* Namibia Land Surveyor

This diagram is annexed to No. dated i.f.o.	The original diagram is No. annexed to No.	S.R. No.E 34/91 Gen.Plan No. Noting Plan OC-2D File No. A.876
Registrar of Deeds		

ANNEXURE 5 : OSHAKATI

APPROVED <i>[Signature]</i>		No. A 65/91	
SURVEYOR-GENERAL		1991-03-01	
SIDES Metres	ANGLES OF DIRECTION	CO-ORDINATES System 22/15 (Prel.) y x	DESIG.
AB	1 933,74	219 52 10	A - 69 867,79 - 469 006,50
BC	7 048,37	269 54 22	B - 71 107,40 - 470 490,65
CD	521,02	6 12 20	C - 78 155,76 - 470 502,19
DE	6 979,96	359 51 39	D - 78 099,44 - 469 984,22
EF	5 732,26	89 45 24	E - 78 116,40 - 463 004,28
FG	3 885,00	140 33 24	F - 72 384,19 - 462 979,93
GA	3 026,76	179 05 15	G - 69 915,99 - 465 980,13
		Δ	- 74 516,98 - 468 925,28 DS 1 M
		Δ	- 75 188,93 - 465 020,69 DS 5 M

DESCRIPTION OF BEACONS:
A, B, C, D, E, F, G - Iron standard

The figure A B C D E F G represents 5703,0061 hectares of land, being

FARM OSHAKATI TOWN AND TOWNLANDS No. 880

situate in Registration Division 'A' REPUBLIC OF NAMIBIA

Surveyed in FEBRUARY 1991 by me *[Signature]*
Land Surveyor

This diagram is annexed to T940/91 No. dated 1991-04-05	The original diagram is No. A / annexed to Transfer/Grant No.	S.R. No. E. 17/91 Gen. Plan No. Noting Plan: RE-5 File No. A 880 Lat. 17° 45' Long. 15° 55'
Registrar of Deeds		

ANNEXURE 6 : REHOBOTH

GOEDGEKEUR

Landmeter-Generaal.

1/15/73.

Nr. A 234/73

Hierdie diagram bevat 5 Velle.

SYE	Meters	RIGTINGS- HOEKE o ' "	KOÖRDINATE		Ben.
			Stelsel 22/17		
			Y	X	
AB	8436,34	269 15 06	A + 292,46	+129534,25	5351
BC	2850,53	269 15 07	B - 8143,16	+129424,08	5350
CD	7604,54	298 39 37	C - 10993,45	+129386,86	Reh. Fläch.
DE	2323,67	349 14 30	D - 17666,27	+133034,11	5083
EF	241,55	356 40 56	E - 18100,02	+135316,94	5344
FG	1335,43	4 09 55	F - 18114,00	+135558,09	5346
GH	5706,90	352 09 25	G - 18017,00	+136889,99	5347
HJ	2427,06	352 09 37	H - 18795,76	+142543,51	5143
JK	40,00	82 10 11	J - 19126,82	+144947,89	5159
KL	275,24	352 09 40	K - 19087,19	+144953,34	5145
LM	169,60	82 09 55	L - 19124,73	+145226,01	5158
MN	282,97	352 09 50	M - 18956,71	+145249,13	5147
NO	169,62	262 10 10	N - 18995,29	+145529,46	5149
OP	42,19	352 09 15	O - 19163,33	+145506,35	5151
PQ	39,99	262 10 55	P - 19169,09	+145548,15	5150
QR	295,11	352 09 32	Q - 19208,71	+145542,71	5165
RS	81,08	353 37 12	R - 19248,97	+145835,06	5167
ST	468,74	354 54 03	S - 19257,98	+145915,64	5168
TU	622,35	341 57 56	T - 19299,64	+146382,52	5189
UV	256,67	309 57 18	U - 19492,31	+146974,29	5174
VW	334,54	277 59 54	V - 19689,06	+147139,12	5185
WX	6977,36	340 01 31	W - 20020,35	+147185,67	5184
XY	5363,16	55 59 48	X - 22403,85	+153743,30	5261
YZ	4160,65	59 47 45	Y - 17957,76	+156742,60	5260
ZA	2553,27	59 47 29	Z - 14361,97	+158835,76	5560
A'B	6289,20	112 35 13	A' - 12155,44	+160120,44	5558
B'C	7172,34	114 21 51	B' - 6348,64	+157704,84	5553
C'D	2109,70	181 58 54	C' + 184,94	+154745,99	5537
D'E	4032,64	176 15 28	D' + 111,99	+152637,55	5536
E'F	3381,70	162 24 50	E' + 375,19	+148613,51	3472
F'G	7435,03	138 40 23	F' + 1396,93	+145389,86	3475
G'H	5169,95	210 20 54	G' + 6306,70	+139806,50	3477
H'A	6733,42	210 20 54	H' + 3694,55	+135344,99	5401

Die figuur A-B-C-D-E-F-G-H-J-K-L-M-N-O-P-Q-R-S-T-U-V-W-X-Y-Z-A'-B'-C'-D'-E'-F'-G'-H'-A uitsluitende figure a-b-c-d, e-f-j-k en f-g-h-j

stel voor 59 207,7819 Hektaar grond, synde

die plaas REHOBOTH DORPSGROND No. 302 geleë

in die Registrasie-afdeling "M" Suidwes-Afrika.

Vervaardig kragtens artikel 39 van wet 9 van 1927.

Hierdie kaart is geheg aan

Nr.

gedateer

REGISTRATEUR van AKTES.

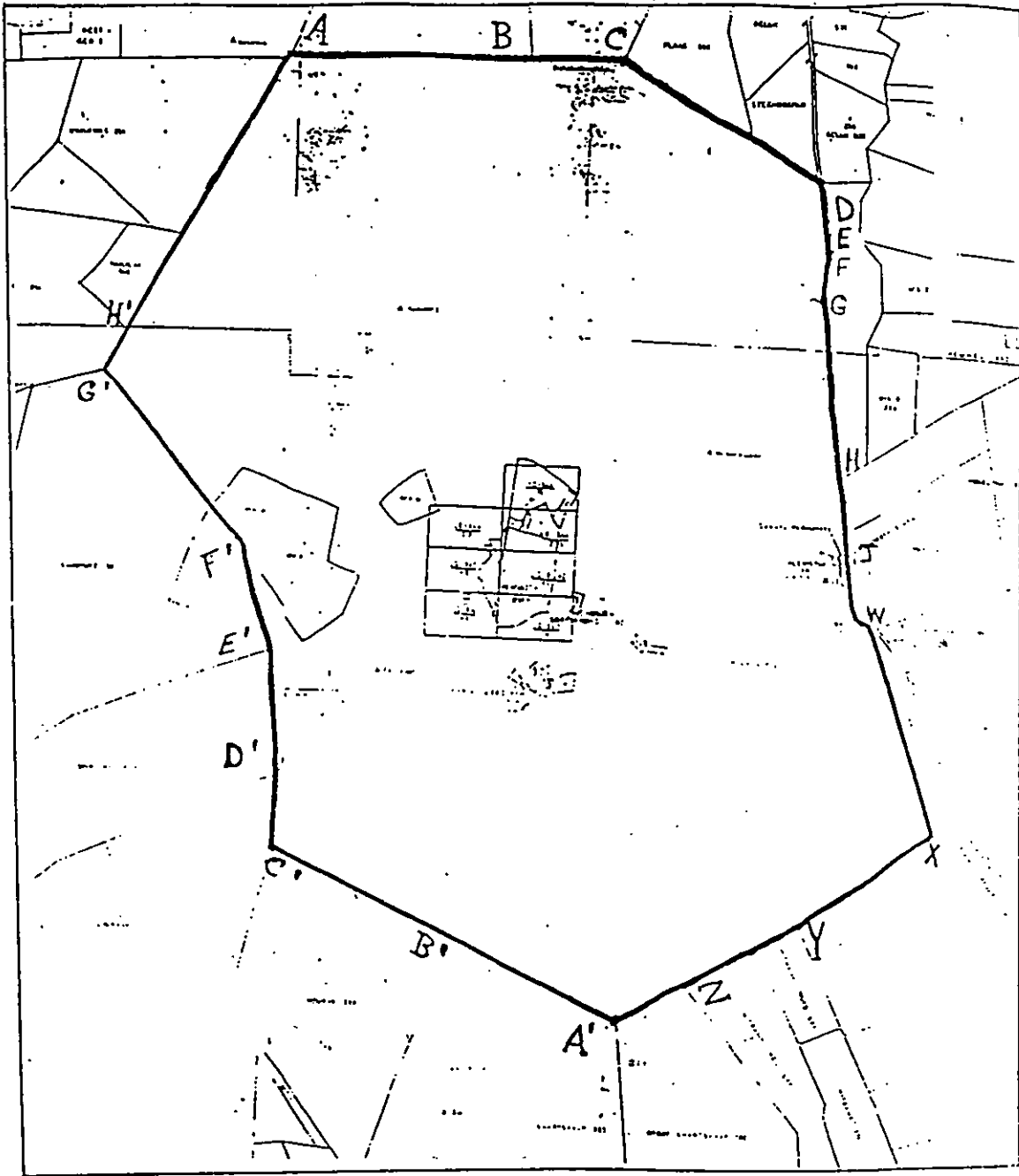
M.S. NR. E115/71

Alg. Plan

Noteerplan L.G.1

Lêer Nr. 2302

ANNEXURE 6 : REHOBOTH



Printed by and obtainable from
WINDHOEK PRINTERS & PUBLISHERS (PTY) LTD.
P.O. Box 1707 — Windhoek 9000 — Namibia